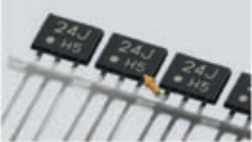


MARKING SAMPLES



Electronic components



Discharge valve



Ceramics



CD



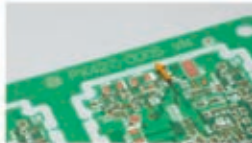
Ampule



PTP sheet



Infusion



Printed Circuit Board



Filter



Video tape



Magnetic card



PET bottle



Heat seal of bag



Glass bottle



Glasses frame

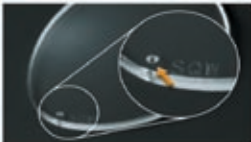
PROCESSING SAMPLES



Film cutting



Cable coat cutting



Hole drilling on glass lens



Non-woven cloth cutting



Label peeling



Gate Cutting

MARKING SAMPLES

Character size
(Typical examples)

0123456789
ABCDEFGHIJKLMNPOQRSTUVWXYZ

0123456789
ABCDEFGHIJKL
abcdefghijklmnopqrstuvwxyz

Logo mark



Barcode



CODE39

ITF

2D code



Data
Matrix

QR

RSS code



(01) 04912345678904

bmp/jpg data



**Global Manufacturing
Solution Sdn. Bhd.**
No. 39 & 41, Jalan Section 1/28,
Taman Kajang Utama,
43000 Kajang, Selangor Darul Ehsan
Malaysia
Tel : 603-8739 1088 / 603-8739 4088
Fax : 603-8737 5117
Email: info@shinsmt.com

Distributor

Shinsei Technology (Malaysia)
No.1, Jalan P/13
Kawasan MIEL, Seksyen 10,
43650 Bandar Baru Bangi,
Selangor Darul Ehsan,
Malaysia
Tel : 603-8925 8022
Fax: 603-8322 3077

Shinsei Technology (Thailand) Co. Ltd.
98/33 Moo 3, Tanyathani Rd. Ladsawhy ,
Lumlukka Pathumtani ,
12150 Thailand
TEL: +66-(0)2-560 1151
FAX: +66-(0)2-997 3138

Laser Marker

LM - 1000



Precision and wide area marking system delivers a high
quality permanent marking solution with 100% verification by
vision camera

KEY FEATURES

World's first

42 - mm variable focal length

Installation is made easy by eliminating mechanical stages needed to mark at different heights.

World's first

42 - mm variable focal length

Character width and position can be kept constant for exceptionally sharp marking.

World's widest

300 x 300 mm wide area

A single 3-Axis CO 2 laser marker covers a 300 x 300 mm wide area

World's first

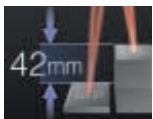
3-Axis laser marking

High accuracy marking can be made on any shaped target without worrying about character deformation or displacement.

Best-in-class

High-speed 30 W output

12,000 mm/sec ensures the LM1000 can match the speed of any production line.



MARKING COMPARISON

Steps

Lower step

Upper step

Traditional model

Faded characters

LM-1000

Inclined surface

Traditional model

Worn and elongated characters

LM-1000

Cylinder

Traditional model

Distorted and elongated characters

LM-1000

Circular cone

Traditional model

Character deformation

LM-1000

A/B side confirmation by **GMS Checker (Model 201)**
Captures images on the flight
• Pattern Recognition
• Numerical
• Symbol

① Inspects features that other sensors cannot

② Inspects *multiple* part features simultaneously

③ Overcomes varying part positions

SPECIFICATIONS

MODEL	Wide area type	
	ML-Z9520	
	Controller	
	ML-Z9500	
	PC software	
(MARKING BUILDER 2)	MB-H2D/MB-H3D	
	Supported OS: Windows XP/2000, Languages: Japanese, English and Chinese	
Marking style	XYZ 3-Axis simultaneous scanning method	
	CO ₂ Laser (Class 4)	
Marking laser	Wavelength	10.6μm
	Average output ³ .	30 W
Guide laser / working distance pointer		Semiconductor laser (class 2), wavelength: 650 mm
Marking area		300 x 300 x 42 mm
Basic working distance (±variation width)		300 mm (±21 mm)
Marking resolution		5 μm
Scan speed		6000 mm/s max.
Character type	Font	original font (numerical value, alphabet, katakana, hiragana and kanji) / user font / true type font
	Barcode	CODE39 / ITF / 2of5/NW7 (CODABAR) / JAN / CODE128
	2D code	QR code / micro QR code / DataMatrix (ECC200)
	RSS code	RSS-14 (Truncated) / RSS-14 (Truncated) CC-A / RSS-14Stacked / RSS-14Stacked CC-A / RSSLimited / RSSLimited CC-A
	Logo image	Custom font, logo (CAD) data
	Logo image	BMP/JPEG/PNG/TIF
Marking conditions	Laser cutting	
	Fixed point / straight line / dashed line / circle / oval	
	Marking style	
	Stationary marking / movement marking (constant speed / encoder)	
	Character size (height x width)	
Program	0.3 to 300 mm	
	Registered programs	
	2000 settings max.	
Supply voltage		100 to 120 VAC / 200 to 240 VAC 50 / 60 Hz 1500 VA max.
Weight		300 kg
Dimension	L x W x H	
	1015 mm x 900 mm x 1500 mm	

300 x 300-mm marking area with unprecedented accuracy

A single ML-Z9500 Series covers 7x the area of traditional models.

